

## ANALOG PRODUCTS

### MC33287 FACT SHEET



#### 33287 CONTACT MONITORING AND DUAL LOW-SIDE PROTECTED DRIVER

The 33287 interfaces between switch contacts and a microcontroller. Eight switch-to-battery (or switch-to-ground) sense inputs monitor switch status. In addition, two internal low-side switches are available to control inductive or capacitive loads.

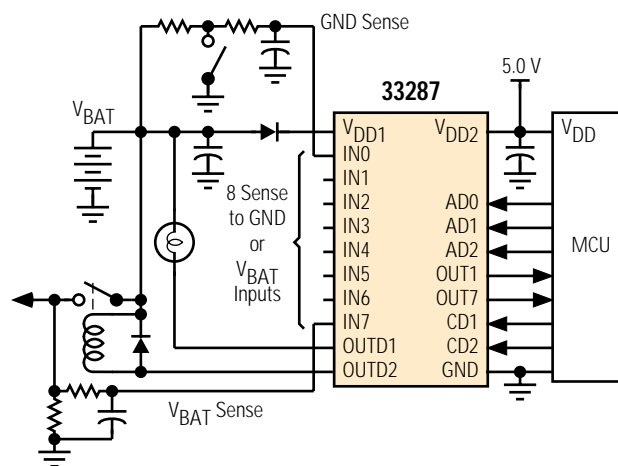
The 33287 has eight sense inputs (rated at 40 V) with thresholds ratiometric to  $V_{BAT}$ . One sense input has a dedicated output for direct interfacing to the MCU and the remaining seven inputs are multiplex interfaced to the MCU.

The two low-side switch outputs are current limited to 535 mA and internally clamped to 50 V. The outputs also have independent overtemperature shutdown and diagnostic reporting.

#### APPLICATIONS

- Aircraft Systems
- Aerospace Systems
- Robotic Systems
- Automotive Systems
- Process Control Systems
- Security Systems
- Applications where Switch Status Verification for Safety, Operation, or Process Control Purposes is of Critical Concern

Simplified Application Diagram



#### CUSTOMER BENEFITS

- Simple interfacing to industry-standard 5.0 V microcontroller
- No need for SPI
- Robust with proven automotive track record
- Ease and versatility of reporting switch status
- Surface-mounted device for space and cost economy of scale with few external parts


Performance	Typical Values
Inputs	8
Outputs	2
Switch Voltage Range	- 0.3 – $V_{PWR}$
Operating Voltage	7.0 – 24 V ( $V_{PWR}$ )
Quiescent Current	110 $\mu$ A
Control	Direct/Mux
Operating Temp	-40°C $\leq T_A \leq$ 125°C

## FEATURES

- Eight high-voltage sense inputs
- Direct interfacing to microcontroller
- Two current limited low-side drivers
- Drivers internally overvoltage clamped and thermally protected
- 55  $\mu$ A standby current
- Additional devices available for comparison in Analog Selector Guide SG1002/D

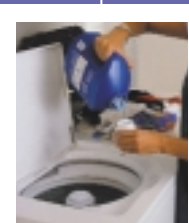
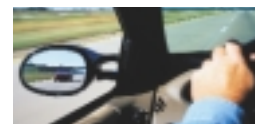
Protection	Detect	Limiting	Shut Down	Auto Retry	Status Reporting
Over Current/SC	•		•		•
Over Temperature	•		•		•
Short to $V_{PWR}$	• Detected by overcurrent or overtemperature)				

Overcurrent and thermal protection applicable on low-side output only

Ordering Information	Package	Ship Method	Motorola Part Number
	20 SOICW	Rail T/R	**33287DW **33287DWR2
Data Sheet Order Number			MC33287/D
Contact Sales for Evaluation Kit Availability			
**Prefix Index: PC = Eng Samples; XC = In Qual; MC = Production			

## QUESTIONS

- Are you looking for an easy-to-design-in device that will monitor the ON/OFF status of multiple switches used in your system?
- Does your system have available a standard microcontroller with few input/output?
- Do you need a device to reduce the switch-monitoring burden placed on the system's microprocessor?
- Do you need a switch status-reporting device that has a sleep mode feature for system power conservation?
- Do you need to drive additional low power load such as relays, with overload protection and diagnostic?
- Do you have little PC board space available for the monitoring of switches or for the driving of peripheral devices or circuits?



### How to reach us:

**USA/EUROPE/Locations Not Listed:** Motorola Literature Distribution;  
P.O. Box 5405, Denver, Colorado 80217  
1-303-675-2140 or 1-800-441-2447

**JAPAN:** Motorola Japan Ltd.; SPS, Technical Information Center,  
3-20-1, Minami-Azabu, Minato-ku, Tokyo 106-8573 Japan  
81-3-3440-3569

**ASIA/PACIFIC:** Motorola Semiconductors H.K. Ltd.; Silicon Harbour Centre,  
2 Dai King Street, Tai Po Industrial Estate, Tai Po, N.T., Hong Kong  
852-26668334

**Technical Information Center:** 1-800-521-6274

**HOME PAGE:** <http://www.motorola.com/semiconductors>



MOTOROLA and the Stylized M Logo are registered in the U.S. Patent & Trademark Office. All other product or service names are the property of their respective owners.  
© Motorola, Inc. 2002

MC33287FS/D  
Rev. 1